

## DRIVE LIGHTS P3 / P6 | SURFACE MOUNT



P3/P6 Drive Lights are suitable for bow lights to assist docking, masts & spreaders, utility lights, engine/locker areas or any other above water use.

Compact & low profile design.

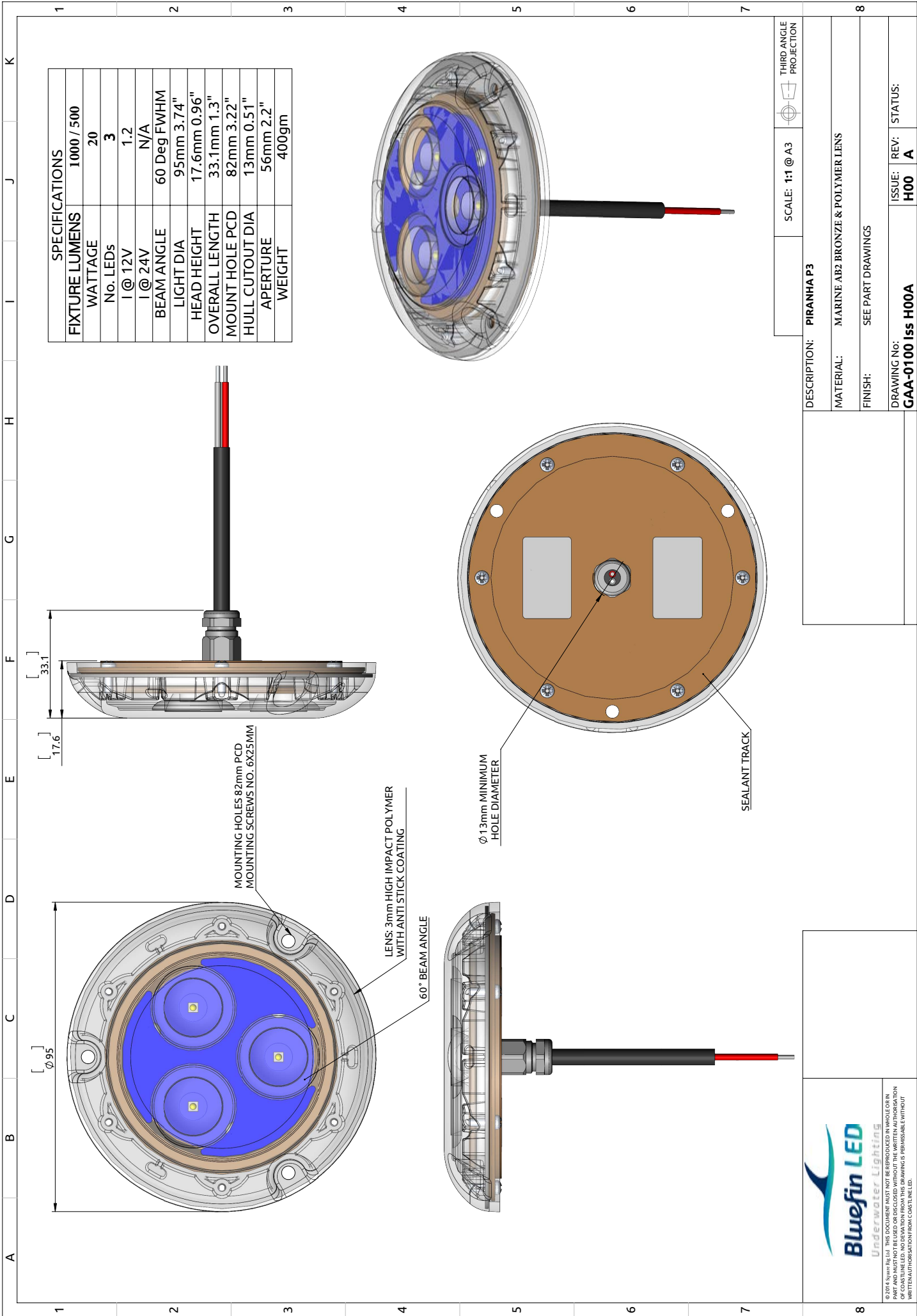
Incredibly simple to install just one small cable entry hole and 3 mounting screws.

New Hydro Block Technology.

- RINA Type approval
- 2-Year Warranty

SPECIFICATION	P3 / P6 DRIVE LIGHTS
Mounting Type	Surface
Hole cut out size	P3: 13 mm / P6: 15MM
Fixture Lumens	P3: 500 Lumens / P6: 1000 Lumens
Max Wattage	P3: 5.6watts / P6: 9.8watts
Typical Life Expectancy	50,000 Hours
Voltage	12v Only
Power Draw	P3: 0.4amps / P6: 0.7amps
Protection	Over / Under Voltage, Over Current, Reverse Polarity protection, Active thermal protection. Hydro block technology
Fixture Profile	17.6mm
Fixture Diameter	P3: 96mm / P6: 110mm
Lens Type	3mm Optical grade high impact polymer, Guard X Coating
Fixture Material	Marine grade Aluminium
Beam Angle	60 Degree
Warranty	2 Year
Type Approval	RINA IEC 60529
Available Colours	Diamond White
Suitable Use	Bow Lights, Spreader lights, Utility Lights or Engine/Locker spaces. For use above the water line.
Driver Type	Integral
Total weight	P3: 400gms / P6: 500gms
Attached cable length	1.8mtr
Included in box	In-line fuse holder & rated fuse, Gel connector, Inline Crimps, Heat shrink, Fixing Screws, Template and installation instructions
ACCESSORIES	(OPTIONAL)
Junction Box	4 Way IP68 Wiring Junction Box
I.Y.S Lighting Control	Control via MFD screen or mobile device





SPECIFICATIONS	
FIXTURE LUMENS	1000 / 500
WATTAGE	20
No. LEDs	3
I @ 12V	1.2
I @ 24V	N/A
BEAM ANGLE	60 Deg FWHM
LIGHT DIA	95mm 3.74"
HEAD HEIGHT	17.6mm 0.96"
OVERALL LENGTH	33.1mm 1.3"
MOUNT HOLE PCD	82mm 3.22"
HULL CUTOUT DIA	13mm 0.51"
APERTURE	56mm 2.2"
WEIGHT	400gm

SCALE: 1:1 @ A3	THIRD ANGLE PROJECTION
DESCRIPTION: <b>PIRANHA P3</b>	
MATERIAL: MARINE AB2 BRONZE & POLYMER LENS	
FINISH: SEE PART DRAWINGS	
DRAWING No:	ISSUE: REV: STATUS:
<b>GAA-0100 Iss H00A</b>	<b>H00 A</b>

DESCRIPTION: <b>PIRANHA P3</b>	
MATERIAL: MARINE AB2 BRONZE & POLYMER LENS	
FINISH: SEE PART DRAWINGS	
DRAWING No:	ISSUE: REV: STATUS:
<b>GAA-0100 Iss H00A</b>	<b>H00 A</b>

**Bluefin LED**  
Underwater Lighting

THIS DRAWING IS THE PROPERTY OF BLUEFIN LED. IT IS TO BE USED ONLY FOR THE PROJECT AND LOCATION FOR WHICH IT WAS CREATED. NO PART AND MATERIALS TO BE RELEASED OR REPRODUCED WITHOUT THE WRITTEN AUTHORIZATION OF BLUEFIN LED. NO DEVIATION FROM THIS DRAWING IS PERMISSIBLE WITHOUT WRITTEN AUTHORIZATION FROM BLUEFIN LED.