

PIRANHA P3 | SURFACE MOUNT

PIRANHA
 — S E R I E S —



PIRANHA P3 Underwater LED light is small yet ferociously powerful producing a class leading 1610 fixture lumens.

Compact & low profile design makes the Piranha P3 the perfect choice for all types of boats and is suitable for transom and side mounting on all hull types.

Incredibly simple to install just one small cable entry hole and 3 mounting screws.

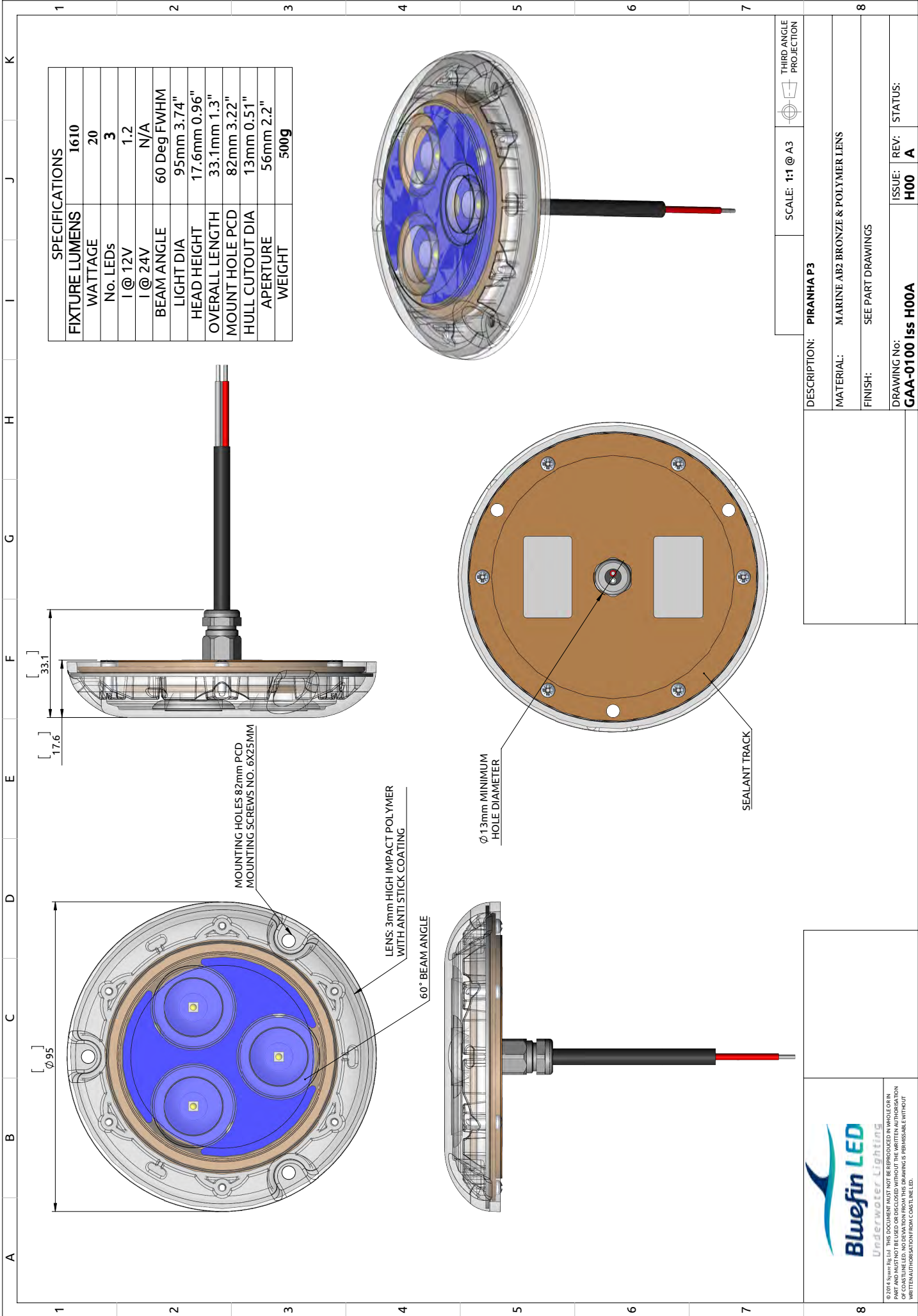
- RINA Type approval
- 2-Year Warranty

SPECIFICATION	PIRANHA P3 MK11 SINGLE COLOUR ● blue ● white
Mounting Type	Surface
Hole cut out size	13 mm
Maximum Lamp Lumens	2200
Fixture Lumens	1610
Max Wattage	20 watts
Typical Life Expectancy	50,000 hours
Voltage	12v
Power Draw	1.2 amps
Protection	Over / Under Voltage, Over Current, Reverse Polarity protection, Active thermal protection. Hydro block technology
Fixture Profile	17.6mm
Fixture Diameter	95mm
Lens Type	3mm Optical grade high impact polymer, Guard X Coating
Fixture Material	AB2 Bronze (standard) or Aluminium
Beam Angle	60 Degree
Warranty	2 Year
Type Approval	RINA IEC 60529
Available Colours	Diamond White 6500k Cobalt Blue
Suitable Use	Below the water-line only
Spacing	1.2 - 2mtr
Driver Type	Integral
Total weight	500 gm
Attached cable length	2 mtr
Included in box	In-line fuse holder & rated fuse, Gel connector, Inline Crimps, Heat shrink, Fixing Screws, Template and installation instructions
ACCESSORIES	(OPTIONAL)
Junction Box	4 Way IP68 Wiring Junction Box
BL-Switch	Panel mount illuminated switch & wiring loom
I.Y.S Lighting Control	Control via MFD screen or mobile device



All Piranha models now available in aluminium finish to suit aluminium/composite hulls

vA4-010122



SPECIFICATIONS	
FIXTURE LUMENS	1610
WATTAGE	20
No. LEDs	3
I @ 12V	1.2
I @ 24V	N/A
BEAM ANGLE	60 Deg FWHM
LIGHT DIA	95mm 3.74"
HEAD HEIGHT	17.6mm 0.96"
OVERALL LENGTH	33.1mm 1.3"
MOUNT HOLE PCD	82mm 3.22"
HULL CUTOUT DIA	13mm 0.51"
APERTURE	56mm 2.2"
WEIGHT	500g

MOUNTING HOLES 82mm PCD
MOUNTING SCREWS NO. 6X25MM

LENS: 3mm HIGH IMPACT POLYMER
WITH ANTI STICK COATING

60° BEAM ANGLE

Ø13mm MINIMUM
HOLE DIAMETER

SEALANT TRACK

SCALE: 1:1 @ A3
THIRD ANGLE PROJECTION

DESCRIPTION:	PIRANHA P3
MATERIAL:	MARINE AB2 BRONZE & POLYMER LENS
FINISH:	SEE PART DRAWINGS
DRAWING No:	GAA-0100 Iss H00A
ISSUE:	H00
REV:	A
STATUS:	

Bluefin LED
Underwater Lighting

THIS DRAWING IS THE PROPERTY OF BLUEFIN LED. IT IS TO BE USED ONLY FOR THE PROJECT AND LOCATION FOR WHICH IT WAS PREPARED. IT IS NOT TO BE REPRODUCED OR TRANSMITTED IN ANY FORM OR BY ANY MEANS, ELECTRONIC OR MECHANICAL, WITHOUT THE WRITTEN AUTHORIZATION OF BLUEFIN LED. NO DERIVATION FROM THIS DRAWING IS PERMISSIBLE WITHOUT WRITTEN AUTHORIZATION FROM BLUEFIN LED.