

**PIRANHA P6 NITRO | SURFACE MOUNT**

**PIRANHA**  
 — SERIES —



PIRANHA P6 Nitro Underwater Light produces 3720 fixture lumens.

Compact low profile design is perfect for all boat types, suitable for transom and side mounting on all hull types.

Switch on for normal power, for Nitro power turn off then back on and the brightness is boosted by 35%.

Incredibly simple to install just one small cable entry hole and 3 mounting screws. Reverse polarity protection with in built driver technology and active thermal rollback.

Suitable for in and out of water use.

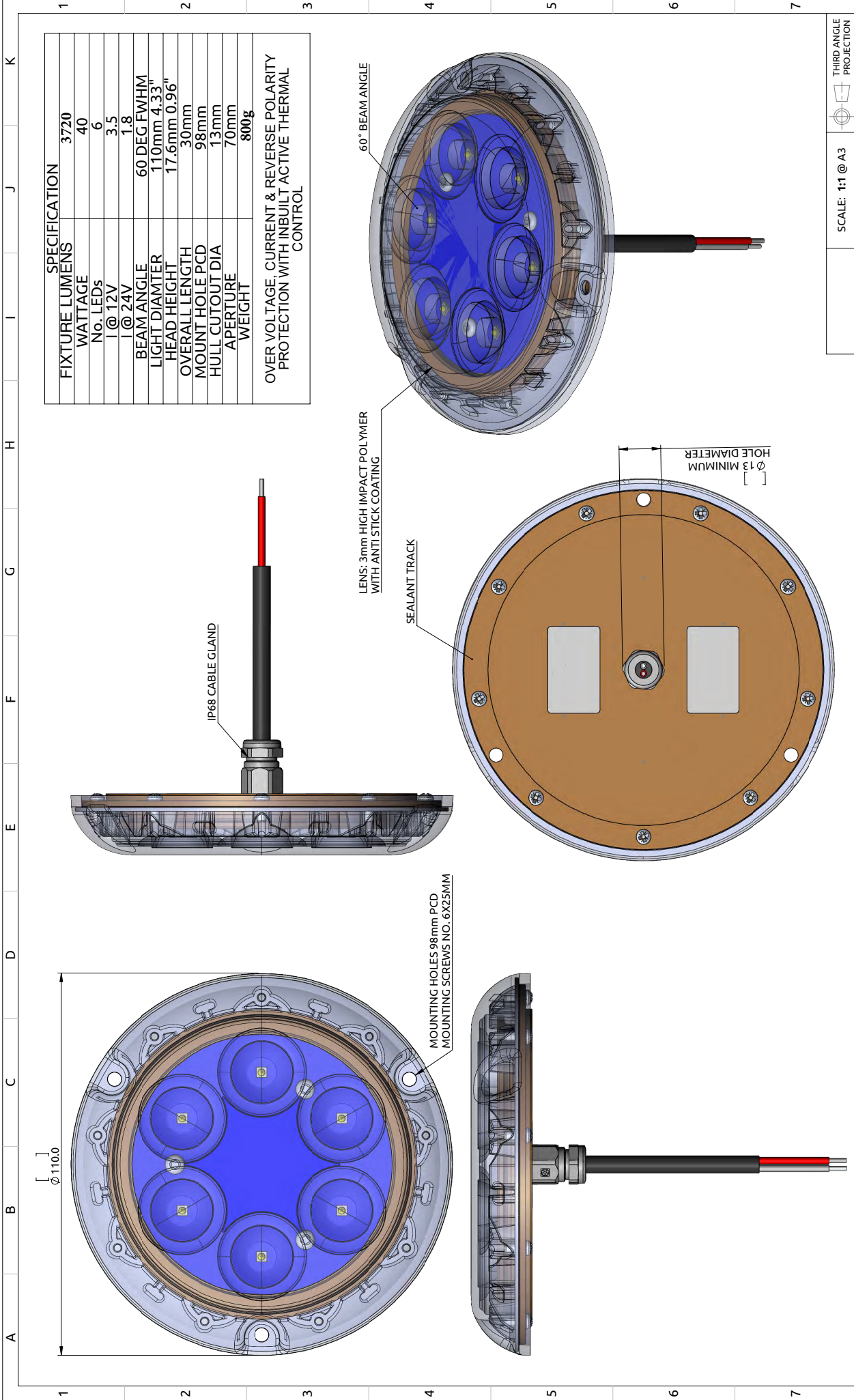
- RINA Type approval
- 2-Year Warranty

SPECIFICATION	PIRANHA P6 NITRO MK11 SINGLE / DUAL COLOUR
Mounting Type	Surface
Hole cut out size	15mm
Maximum Lamp Lumens	4600
Fixture Lumens	3720
Max Wattage	40 watts
Typical Life Expectancy	50,000 Hours
Voltage	12v or 24v (Dual Colour 12v only)
Power Draw	3.5 amps @ 12v / 1.8 amps @ 24v
Protection	Over / Under Voltage, Over Current, Reverse Polarity protection, Active thermal protection. Hydro block technology.
Fixture Profile	17.6mm
Fixture Diameter	110mm
Lens Type	3mm Optical grade high impact polymer, Guard X Coating
Fixture Material	AB2 Bronze (standard) or Aluminium
Beam Angle	60 Degree
Warranty	2 Year
Type Approval	RINA IEC 60529
Available Colours	Diamond White 6500k Cobalt Blue Dual Colour White/Blue
Suitable Use	Above & below the water-line
Spacing	1.2 - 2mtr
Driver Type	Integral
Total weight	800 gm
Attached cable length	2 mtr Over-moulded
Included in box	In-line fuse holder & rated fuse, Gel connector, Inline Crimps, Heat shrink, Fixing Screws, Template and installation instructions
ACCESSORIES	(OPTIONAL)
Junction Box	4 Way IP68 Wiring Junction Box
BL-Switch	Panel mount illuminated switch & wiring loom
220/110v Power Supply	Power supply 24v
I.Y.S Lighting Control	Control via MFD screen or mobile device



All Piranha models now available in aluminium finish to suit aluminium/composite hulls

vA4-010122



DESCRIPTION: <b>PIRANHA P6 NITRO</b>		SCALE: 1:1 @ A3	THIRD ANGLE PROJECTION
MATERIAL: MARINE AB2 BRONZE & POLYMER LENS			
FINISH: SEE PART DRAWINGS			
DRAWING No:	ISSUE:	REV:	STATUS:
<b>GAA-0128 Iss B00A</b>	<b>B00</b>	<b>A</b>	

**Bluefin LED**  
Underwater Lighting

THIS DRAWING IS THE PROPERTY OF BLUEFIN LED. IT IS TO BE USED FOR THE MANUFACTURE OF THE PART AND MUST NOT BE REPRODUCED OR DISCLOSED WITHOUT THE WRITTEN AUTHORIZATION OF BLUEFIN LED. NO DEVIATION FROM THIS DRAWING IS PERMISSIBLE WITHOUT WRITTEN AUTHORIZATION FROM BLUEFIN LED.