

ORCA OR48 CC | SURFACE MOUNT

Signature
SERIES



ORCA OR48 CC is the most powerful surface mounted Underwater LED light available.

Almost endless colour combinations to choose from, lights can be sequenced, strobed, dimmed or beat to the sound of your music choice with our unique "sound to light feature".

Machined from Billet AB2 Marine grade Bronze.

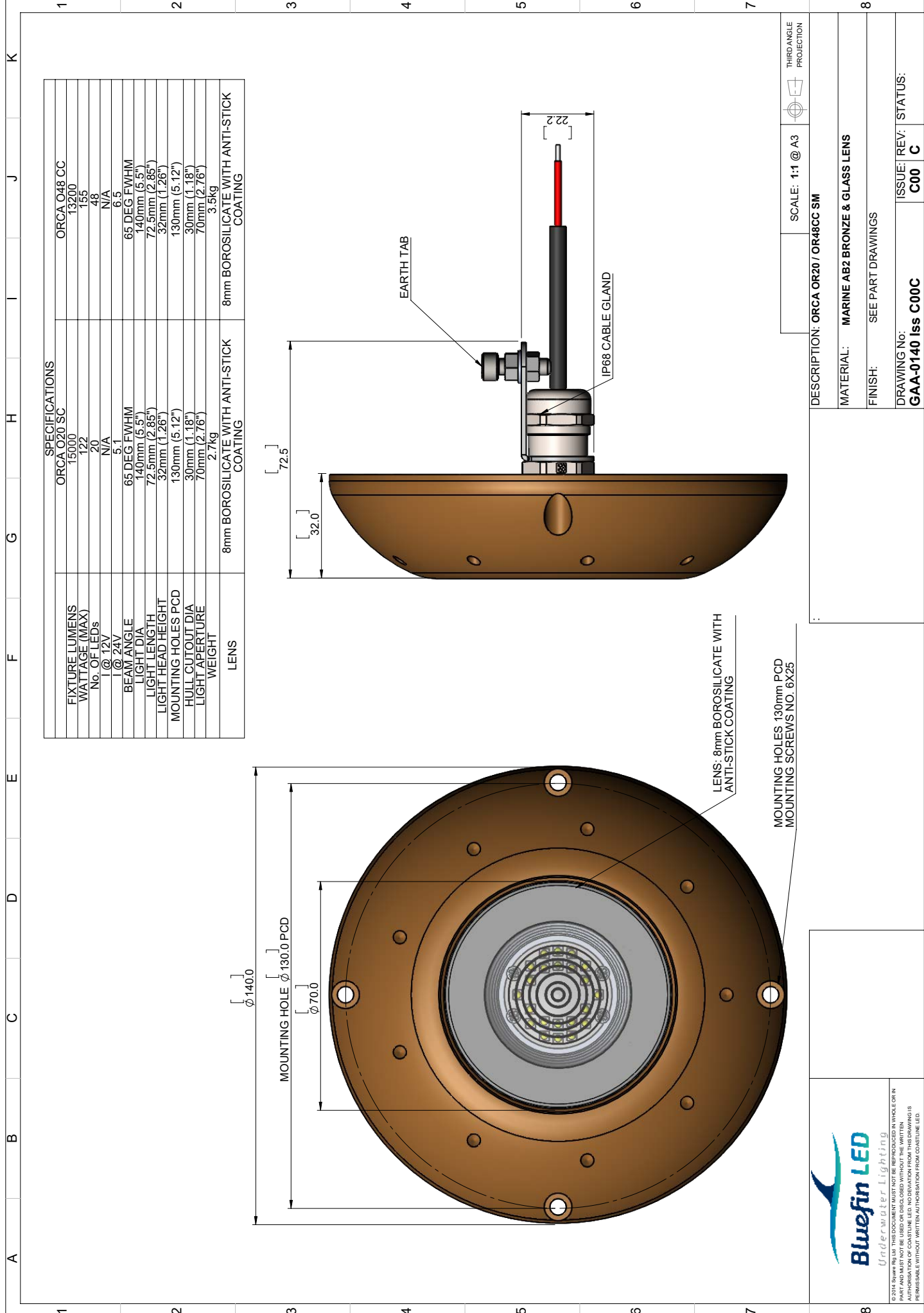
Suitable for Transom mounting on all hull types.

External Driver with active thermal rollback.

- RINA Type approval
- 2-Year Warranty

SPECIFICATION	ORCA OR48 CC COLOUR CHANGE
Mounting Type	Surface
Hole cut out size	22mm
Maximum Lamp Lumens	15000
Fixture Lumens	13200
Max Wattage	155 Watts
Typical Life Expectancy	50,000 Hours
Voltage	24v
Power Draw	6.5 amps
Protection	Over / Under Voltage, Over Current, Reverse Polarity protection, Thermal protection.
Fixture Profile	32mm
Fixture Diameter	140mm
Lens Type	Optical grade 8mm Borosilicate glass with Guard X coating
Fixture Material	AB2 Bronze
Beam Angle	65 Degree FWHM
Warranty	2 year
Type Approval	RINA IEC 60529
Available Colours	RGBW Colour change
Features	Endless colours, cycling, strobe, dimmer or sound to light
Suitable Use	Below the water-line only
Spacing	1.2 - 2mtr
Driver Type	External IP67 Plug and play remote box with DMX/WIFI control Must purchase the WIFI/DMX Controller for functions
Total weight	3.5kg
Attached cable length	2 mtr Plug & play
Included in box	In-line fuse holder & rated fuse, Gel connector, Inline Crimps, Heat shrink, Fixing Screws, Template and installation instructions
ACCESSORIES	(OPTIONAL)
Junction Box	4 Way IP68 Wiring Junction Box
Delrin Sleeve	Isolating kit for steel, aluminium and carbon fibre hulls
220/110v Power Supply	Power supply 24v
WIFI/DMX Controller	DMX controller with built in WIFI and phone/tablet app download
I.Y.S Lighting Control	Control via MFD screen or mobile device





SPECIFICATIONS	
FIXTURE LUMENS	ORCA O20 SC
WATTAGE (MAX)	15000
No. OF LEDs	122
V @ 12V	20
V @ 24V	N/A
BEAM ANGLE	5.1
LIGHT DIA	65 DEG FWHM
LIGHT LENGTH	140mm (5.5")
LIGHT HEAD HEIGHT	72.5mm (2.85")
MOUNTING HOLES PCD	32mm (1.26")
HULL CUTOUT DIA	130mm (5.12")
LIGHT APERTURE	30mm (1.18")
WEIGHT	70mm (2.76")
LENS	2.7kg
	3.5kg
	8mm BOROSILICATE WITH ANTI-STICK COATING
	8mm BOROSILICATE WITH ANTI-STICK COATING

SCALE: 1:1 @ A3	THIRD ANGLE PROJECTION
DESCRIPTION: ORCA OR20 / OR48CC SM	
MATERIAL: MARINE AB2 BRONZE & GLASS LENS	
FINISH: SEE PART DRAWINGS	
DRAWING NO: GAA-0140 Iss C00C	ISSUE/REV: STATUS: C00 C



THIS DRAWING IS THE PROPERTY OF BLUEFIN LED. IT IS TO BE USED ONLY FOR THE SPECIFIC PROJECT AND VEHICLE FOR WHICH IT WAS DESIGNED. IT IS NOT TO BE REPRODUCED, COPIED, OR TRANSMITTED IN ANY FORM OR BY ANY MEANS, ELECTRONIC OR MECHANICAL, WITHOUT THE WRITTEN AUTHORIZATION OF BLUEFIN LED. NO DEVIATION FROM THIS DRAWING IS PERMISSIBLE WITHOUT WRITTEN AUTHORIZATION FROM BLUEFIN LED.