

**SY ELITE SERIES | THRU-HULL INTERCHANGEABLE**

**SUPERYACHT ELITE**  
 — SERIES —



The Elite Series SY48 IFM produces 22000 fixture lumens.

Almost unlimited mounting options thanks to its ultra-low profile bezel.

Thru Hull mounting offers secure fixing with the additional benefit of a removable LED cartridge that can be serviced inside the hull.

Available in single colour white or blue, or RGBW Colour Change model with full WIFI DMX compatibility.

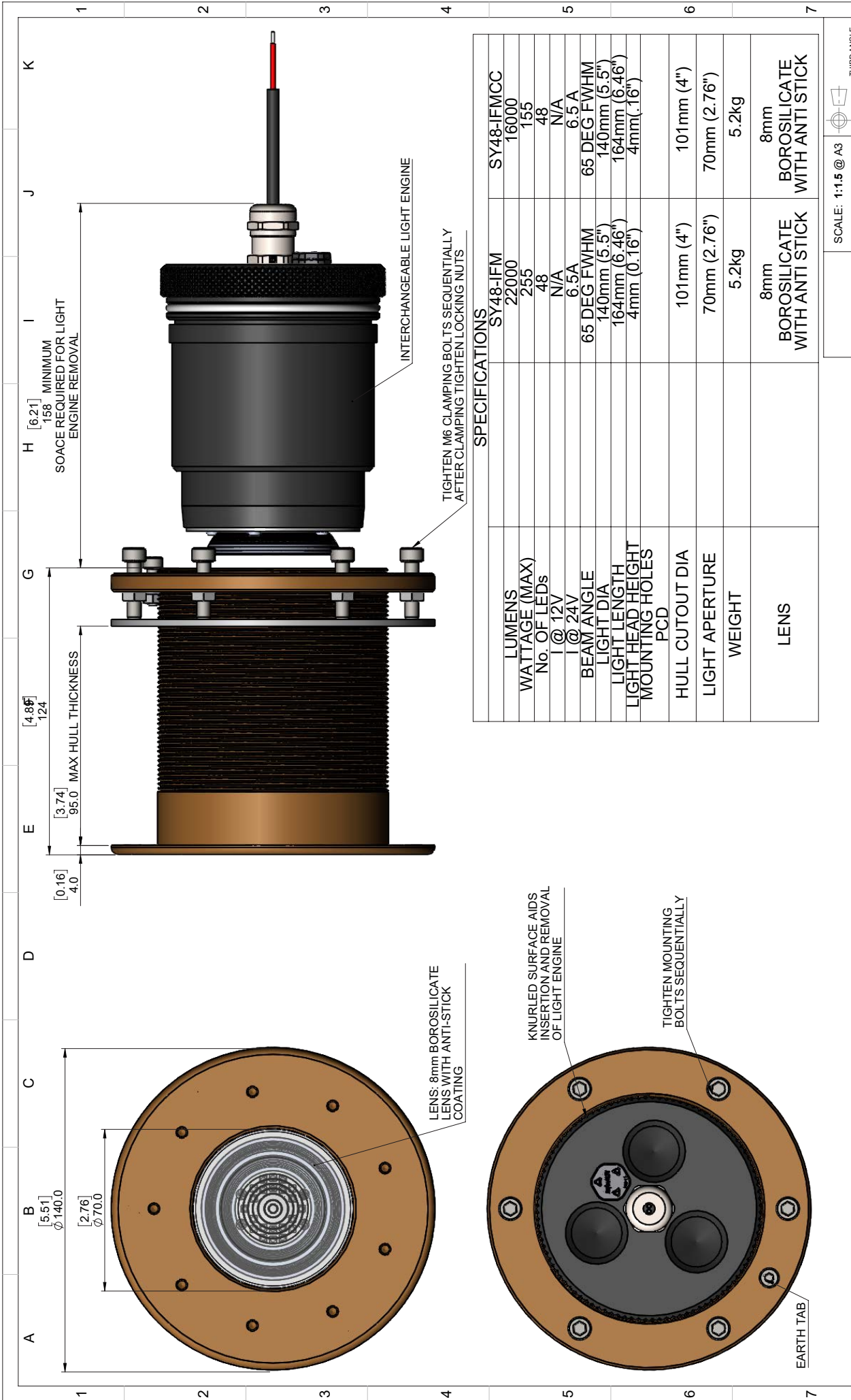
RGBW Colour Change model can be controlled via our dedicated touchpad controller/I.Y.S System or via a 3rd party device such as i phone, android or tablet, alternatively the lights can be integrated into the yachts existing control system.

Delrin isolation sleeve must be used on Steel, Aluminium or Carbon composite hulls.

- RINA Type approval
- 2-Year Warranty

SPECIFICATION	SUPERYACHT ELITE INTERCHANGEABLE SERIES
Mounting Type	Thru-Hull Interchangeable
Hole cut out size	101mm
Fixture Lumens	22,000
Max Wattage	210 Watts
Typical Life Expectancy	50,000 hours
Voltage	110 / 220v
Power Draw	1.8 amp @ 110v / 1 amp @ 220v
Protection	Over / Under Voltage, Over Current, Reverse Polarity protection, Thermal protection. MLST Sealing technology
Fixture Profile	4mm
Fixture Diameter	140mm
Fixture Length	170mm
Lens Type	Optical grade 8mm Borosilicate glass with Guard X coating
Fixture Material	AB2 Bronze with aluminium light engine cartridge
Beam Angle	65 Degree
Warranty	2 year
Type Approval	RINA IEC 60529
Available Colours	Diamond White 6500k Topax Blue RGBW
Features	Endless colours, cycling, strobe, dimmer or sound to light
Suitable Use	Below the water-line only
Spacing	1.2 - 2mtr
Driver Type	External IP67 Plug and play remote box with DMX/WIFI control Must purchase the WIFI/DMX Controller for functions
Total weight	5.2kg
Attached cable length	1.8mtr Plug & play
Included in box	In-line fuse holder & rated fuse, Gel connector, Inline Crimps, Heat shrink, Fixing Screws, Template and installation instructions
<b>ACCESSORIES</b>	<b>(OPTIONAL)</b>
Junction Box	4 Way IP68 Wiring Junction Box
Delrin Sleeve	Isolating kit for steel, aluminium and carbon fibre hulls
220/110v Power Supply	Power supply 24v for up to 5 lights
WIFI/DMX Controller	DMX controller with built in WIFI and phone/tablet app download
I.Y.S Lighting Control	Control via MFD screen or mobile device





SPECIFICATIONS	
LUMENS	SY48-IFM SY48-IFMCC
WATTAGE (MAX)	22000 16000
No. OF LEDS	255 155
I @ 12V	48 48
I @ 24V	N/A N/A
BEAM ANGLE	6.5A 6.5 A
LIGHT DIA	65 DEG FWHM 65 DEG FWHM
LIGHT LENGTH	140mm (5.5") 140mm (5.5")
LIGHT HEAD HEIGHT	164mm (6.46") 164mm (6.46")
MOUNTING HOLES	4mm (0.16") 4mm(0.16")
PCD	
HULL CUTOUT DIA	101mm (4") 101mm (4")
LIGHT APERTURE	70mm (2.76") 70mm (2.76")
WEIGHT	5.2kg 5.2kg
LENS	8mm BOROSILICATE WITH ANTI STICK 8mm BOROSILICATE WITH ANTI STICK

**Bluefin LED**  
Underwater Lighting

**Bluefin LED**  
Underwater Lighting

ALL DIMENSIONS ARE IN MILLIMETERS

**TOLERANCES ON ALL DIMENSIONS UNLESS OTHERWISE STATED**

WHOLE UNITS: ±0.1  
ONE DECIMAL PLACE: ±0.05  
TWO DECIMAL PLACES: ±0.025  
ANGLES: 0.1 TO 0.5  
ALL UNSPECIFIED CHAMFERS: 0.1 TO 0.5

BREAK ALL SHARP EDGES:

ISS: P00 REV: A STATUS: RELEASED

DATE: 30/05/2018

CHANGE:

DRWN: DWL APH

CHKD: APH

APPR: APH

NOTES:

DESCRIPTION: GW/IFM

MATERIAL: SEE PART DRAWINGS

FINISH: SEE PART DRAWINGS

DRAWING NO.: GAA-0105 Iss P00A

SCALE: 1:1.5 @ A3

SHEET: 1

THIRD ANGLE PROJECTION