

DECK/PATHWAY LIGHT



All new Deck/Pathway Light, manufactured from 316L Polished stainless steel with patented compact design.

With high output LED's giving you the ultimate illumination solution for walkways in marinas, docks or anywhere you need unobtrusive lighting.

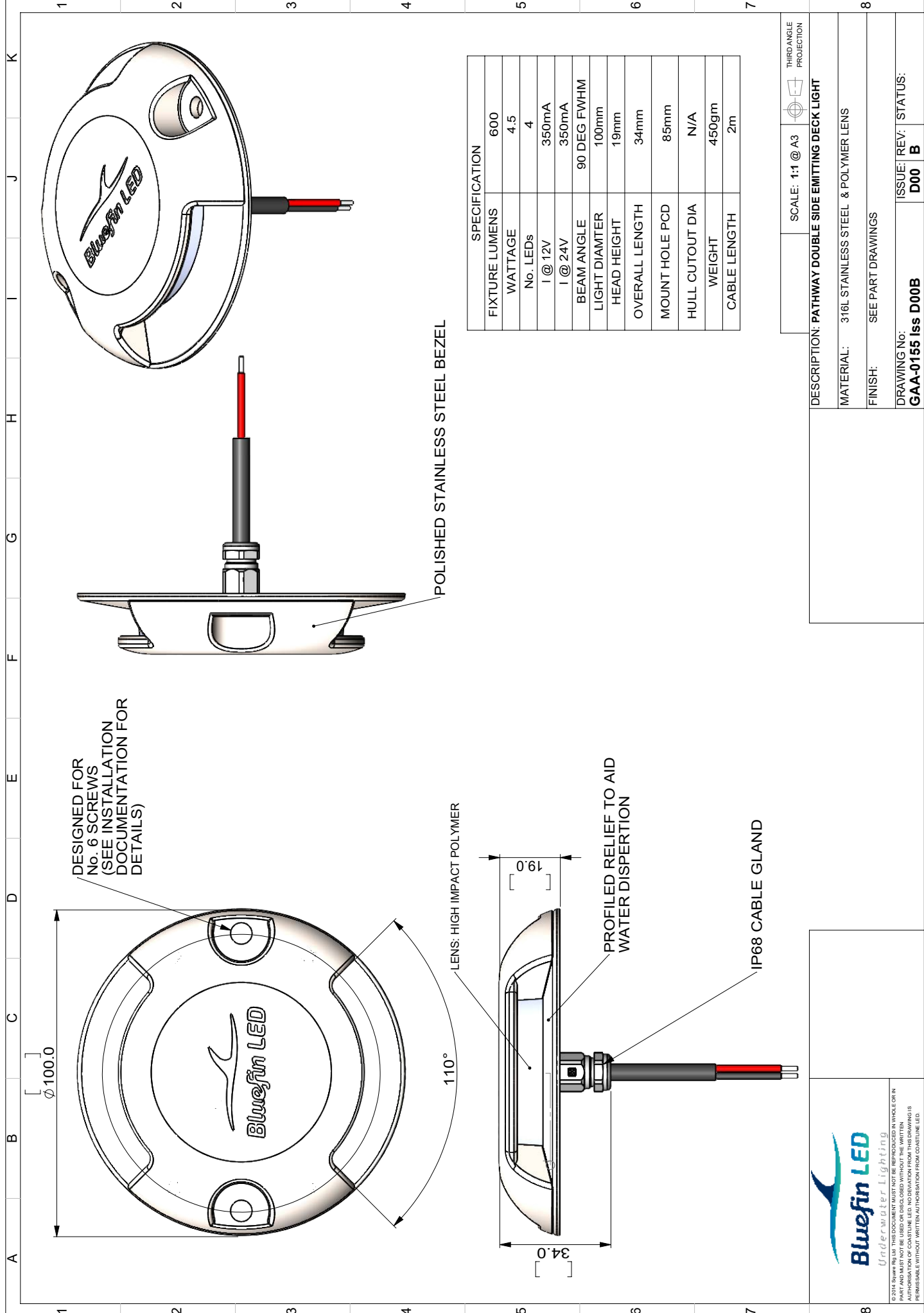
Colour combinations available to match every situation on land or sea.

- 2-Year Warranty

SPECIFICATION	DECK/PATHWAY LIGHT
Hole cut out size	13mm
Fixture Lumens	600Lm
Max Wattage	8.5 Watts
Typical Life Expectancy	40,000 Hours
Voltage	12v AC/DC
Power Draw	350ma
Protection	IP68
Fixture Profile	19 mm
Fixture Diameter	100 mm
Fixture Material	316L Stainless Steel
Beam Angle	Flat 110 Degree
Warranty	2 year
Available Colours	Warm White, Cold White, Blue, Cold White/Blue, Blue/Green***, White/Green***
Suitable Use	Above the waterline only, pathways, pontoons and docks walkways
Driver Type	Integrated
Attached cable length	2 Mtr over-moulded

***SPECIAL ORDER ONLY





SPECIFICATION	
FIXTURE LUMENS	600
WATTAGE	4.5
No. LEDs	4
I @ 12V	350mA
I @ 24V	350mA
BEAM ANGLE	90 DEG FWHM
LIGHT DIAMTER	100mm
HEAD HEIGHT	19mm
OVERALL LENGTH	34mm
MOUNT HOLE PCD	85mm
HULL CUTOUT DIA	N/A
WEIGHT	450gm
CABLE LENGTH	2m

SCALE: 1:1 @ A3

THIRD ANGLE PROJECTION

DESCRIPTION: PATHWAY DOUBLE SIDE EMITTING DECK LIGHT	
MATERIAL:	316L STAINLESS STEEL & POLYMER LENS
FINISH:	SEE PART DRAWINGS
DRAWING No:	GAA-0155 Iss D00B
ISSUE/ REV:	STATUS:
	D00 B

Bluefin LED
Underwater Lighting

Bluefin LED is a registered trademark of Bluefin LED. All rights reserved. This drawing is for informational purposes only and is not intended for use in any vehicle or in any application where safety is a concern. Bluefin LED is not responsible for any damage or injury caused by the use of this drawing. Bluefin LED is not responsible for any damage or injury caused by the use of this drawing. Bluefin LED is not responsible for any damage or injury caused by the use of this drawing. Bluefin LED is not responsible for any damage or injury caused by the use of this drawing.